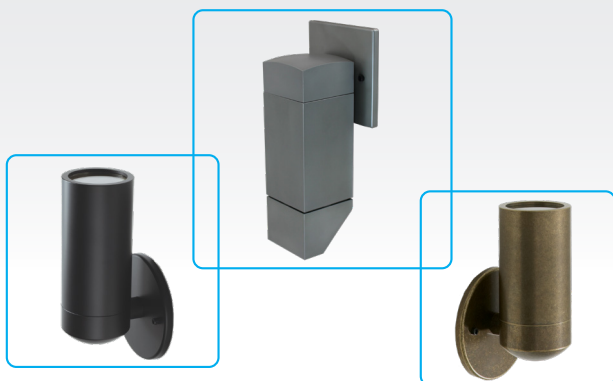


New Product Notice

WM2 COB LED Wall Mount Light

Precision machined aluminum or brass LED lighting fixture available with 120-277V Integral Driver COB LED or Remote Driver COB LED (requires remote driver mount). Modular industry standard components allow for simple field replacement and future upgrades. Wet or dry location capable and certified for wall mount applications, the WM2 Wall Mount fixture is perfect for all interior, exterior, residential, commercial, retail, and hospitality uses.



Features¹

- Industry standard COB LED components and wiring connectors used to simplify maintenance and future upgrades.
- Field replaceable optics, COB, and driver.
- Thick walled cap, optimized high temperature silicone O-ring placement, and molded silicone fixture lead seal to prevent leaking.
- Available in round and square shapes.
- Can be mounted pointing up or down.
- Regress caps allow for water drainage off of lens when pointed up.
- Tested and certified for wet or dry location use in interior or exterior wall mount applications.

Specifications¹

Integral Driver COB LED

- Input voltage: 120-277VAC
- Lumen Output (nominal)²: 1200lm, 1600lm.
- Optics: 15°, 24°, 36°, 55°, 65°.
- CCT: 2700K, 3000K, 3500K, 4000K.
- CRI: 80, 90.
- L70 > 50,000 hours.
- Dimming³: Programmable tri-dimming (TRIAC, ELV, 0-10V) down to 1%.

Remote Driver COB LED

- Lumen Output (nominal)²:
 - 1800lm @ 350mA,
 - 2400lm @ 500mA,
 - 3200lm @ 700mA.
- Optics: 15°, 24°, 36°, 55°, 65°.
- CCT: 2700K, 3000K, 3500K, 4000K.
- CRI: 80, 90.
- L70 > 50,000 hours.

1. Features and Specifications subject to change without notice. Please see latest specification sheet(s) on website for latest information.
2. Lumen Output (nominal) is ideal lumen output of light engine only in lab conditions. Actual fixture output will vary with fixture/cap type, material, lens/optics options, CRI, CCT, mounting, orientation, and environmental conditions. For more accurate information, see fixture photometry files on website.
3. Contact Vision3 for dimmer compatibility and dimming range.