

# VISION-3 LIGHTING

## Spike Mount with Cap Option **MODEL MO18** Low Voltage Landscape Mount

### Specifications:

#### Spike

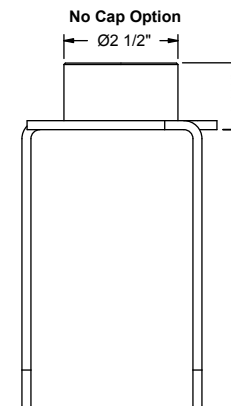
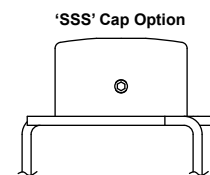
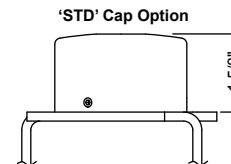
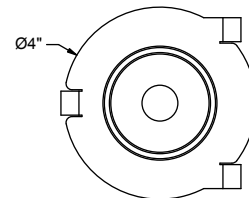
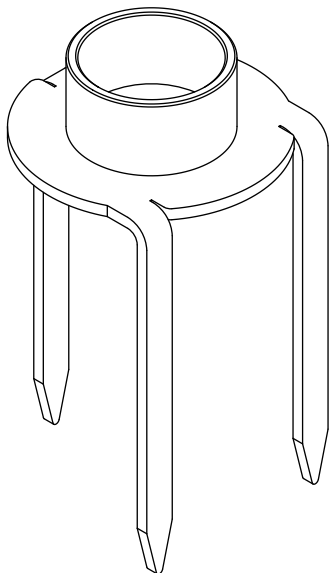
Spike made from corrosion resistant 316 Stainless Steel. Spike Contains a welded 2 1/2 Dia cup for wire connections.

#### Caps

Caps are machined from 6061-T6 aluminum, C36000 brass, or 304 stainless steel. Cap contains a 1/2" NPS threaded mounting hole. Standard cap is locked to mount with three 18-8 stainless steel set screws. Single Set Screw cap is locked to mount with one 18-8 stainless steel set screw, which uses the same tool as used on the Vision3 Knuckle for one tool adjustment.

#### Finish

TGIC thermo set polyester powder coat paint available in 14 standard colors. On aluminum model, finish is applied over a corrosion resistant, hexavalent chromium free, RoHS compliant coating. Aluminum model available in one additional metal finish: Clear Anodized. Brass model available in three additional metal finishes: Natural, Polished, and Aged. Stainless steel model available in three additional metal finishes: Natural, Polished, and Brushed.



### Ordering Information:

Model	Finish <sup>2</sup>	Cap
MO18A - Aluminum	<b>Powder Coat Finishes:</b>	0 - No Cap <sup>1</sup>
MO18B - Brass	BL - Black	STD - 3 Set Screw Cap
MO18S - Stainless	BLT - Textured Black	SSS - Single Set Screw Cap
	BN - Bronze	
	BNT - Textured Bronze	
	BAT - Textured Bark	
	WI - White	
	GRT - Textured Green	
	SI - Silver	
	GY - Grey	
	BE - Beige	
	GNT - Textured Granite	
	SAT - Textured Sand	
	PAT - Textured Patina	
	EAT - Textured Earth	
	<b>Metal Finishes:</b>	
	CLA - Clear Anodized (MO18A only)	
	NAT - Natural (MO18B & MO18S only)	
	POL - Polished (MO18B & MO18S only)	
	AGE - Aged (MO18B only)	
	BRU - Brushed (MO18S only)	

**Notes:**

1. No cap option only available with MO18S and NAT finish option.
2. Finish applies to cap only. Spike will have NAT finish.
3. Specifications, certifications, and ordering information are subject to change. Please check website for latest specification sheets.

Example: **MO18A - BN - SSS**