

VISION-3 LIGHTING

Wall Mount Remote Ballast **MODEL BM4** 120/208/240/277 Volt, 150 Watt Max. Magnetic Ballast 120 Volt, 70 Watt Max. Electronic Ballast

Specifications:

Housing: NEMA Type 3R steel box with screw cover. 18-8 stainless steel hardware. 304 stainless steel mount brackets (Mounting hardware not included).

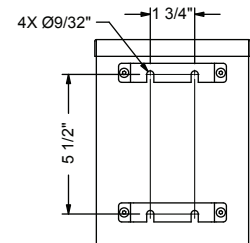
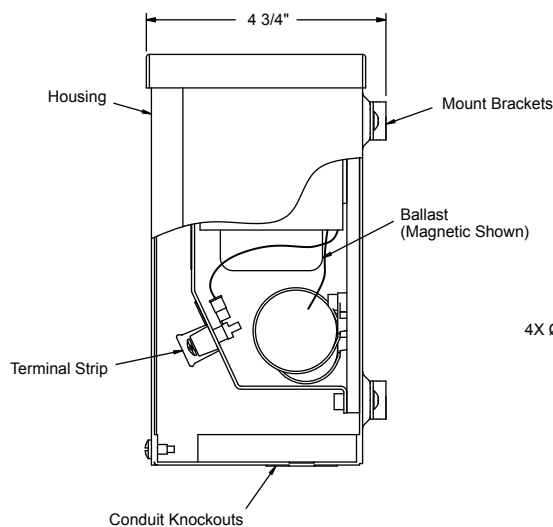
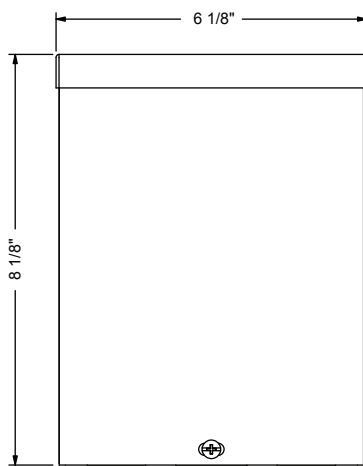
Electrical: Box constructed with conduit entry knockouts on the bottom for conduit connection and cable entry. (Conduit and cable not included.) Terminal strip allows for fast, easy wiring.

Magnetic Ballast: 60 Hz input, high power factor, magnetic metal halide ballast available in 39W, 70W, 100W, or 150W. Multi-tap (120V, 208V, 240V, 277V) input allows for field wiring to desired voltage. Minimum lamp starting temperature: -30°C. Maximum remote distance: 50 feet.

Electronic Ballast: Single or Dual 50/60 Hz 120 Volt input, high power factor, thermally protected electronic metal halide ballasts available in 20W, 39W, & 70W. Minimum lamp starting temperature: -30°C. Minimum ballast temperature: -15°C. Maximum remote distance: 10 feet. (See installation instructions for remote wiring guidelines).

Finish: TGIC thermo-set polyester powder coat paint available in 14 standard colors.

Certification: CSA tested & certified to US and Canadian safety standards for wet location wall mount use per UL1598 & CSA C22.2 No. 250-08.



Mount Bracket Detail



Ordering Information:

Fixture Catalog String ^{1,2}	Model	Finish	Ballast Type ³	Wattage ³
	BM4			
		BL - Black	M-MH - Magnetic Metal Halide ⁴	1X20 - Single 20 Watts
		BLT - Textured Black	E-MH - Electronic Metal Halide ⁵	1X39 - Single 39 Watts
		BN - Bronze		1X70 - Single 70 Watts
		BNT - Textured Bronze		1X100 - Single 100 Watts
		BAT - Textured Bark		1X150 - Single 150 Watts
		WI - White		2X20 - Dual 20 Watts
		GRT - Textured Green		2X39 - Dual 39 Watts
		SI - Silver		2X70 - Dual 70 Watts
		GY - Grey		
		BE - Beige		
		GNT - Textured Granite		
		SAT - Textured Sand		
		PAT - Textured Patina		
		EAT - Textured Earth		

Notes:

- Ballast must be specified with an approved Vision3 Lighting metal halide fixture.
- See fixture submittal for specifications, limitations, and correct catalog number logic.
- Ballast type and wattage must match fixture lamp type.
- M-MH Ballast option available with 1X39, 1X70, 1X100, and 1X150 Wattage options only. M-MH is a multi-tap ballast with 120V, 208V, 240V, and 277V inputs and has a maximum remote distance of 50 ft.
- E-MH Ballast option available with 1X20, 1X39, 1X70, 2X20, 2X39, and 2X70 Wattage options only. E-MH is available with 120V input only and has a maximum remote distance of 10 ft.
- Specifications, certifications, and ordering information are subject to change. Please check website for latest specification sheets.

Example: *Fixture Catalog String - BM4 - BN - M-MH - 1X70*